

COMMISSION UPDATE

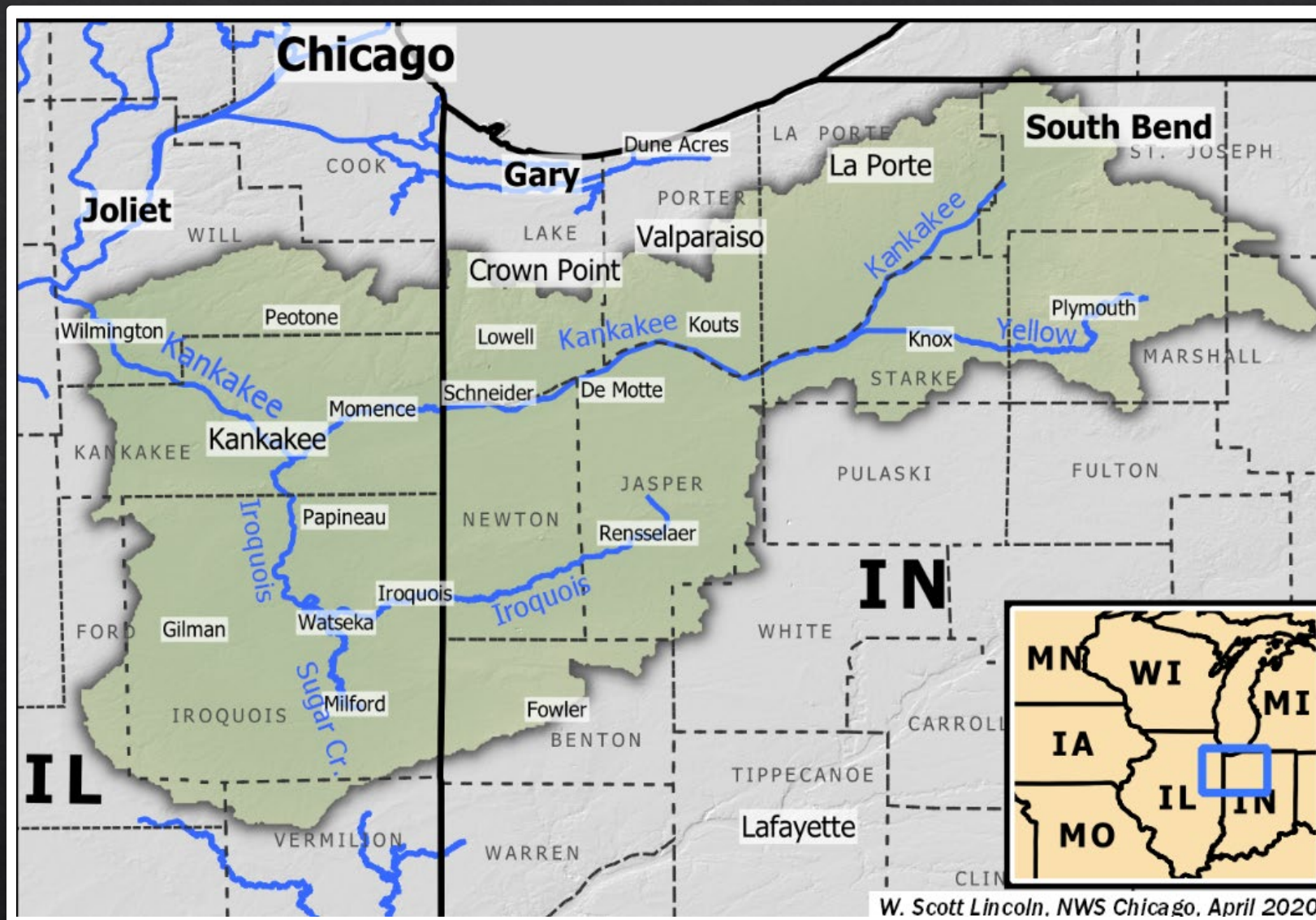
June 20, 2025

KANKAKEE RIVER BASIN AND YELLOW RIVER BASIN DEVELOPMENT COMMISSION

Scott D. Pelath, Executive Director



KANKAKEE RIVER BASIN





MISSION

*The Kankakee River Basin
and Yellow River Basin
Development Commission
advances Northwest
Indiana's safety, economic
prosperity, and quality of
its natural resources.*

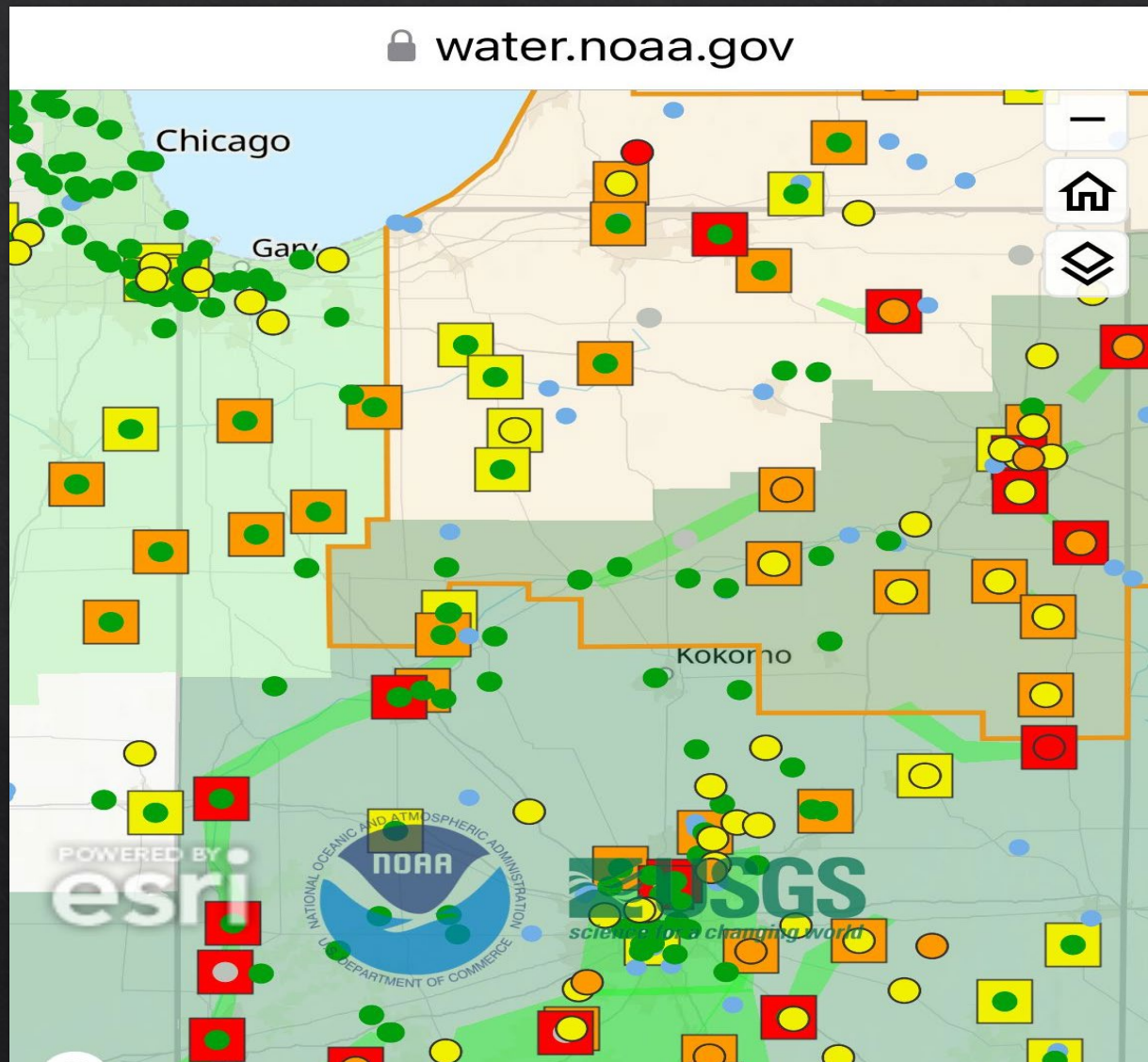
FORTY-YEAR WORK PLAN

[illegible]

HIGH WATER EVENT REVIEW

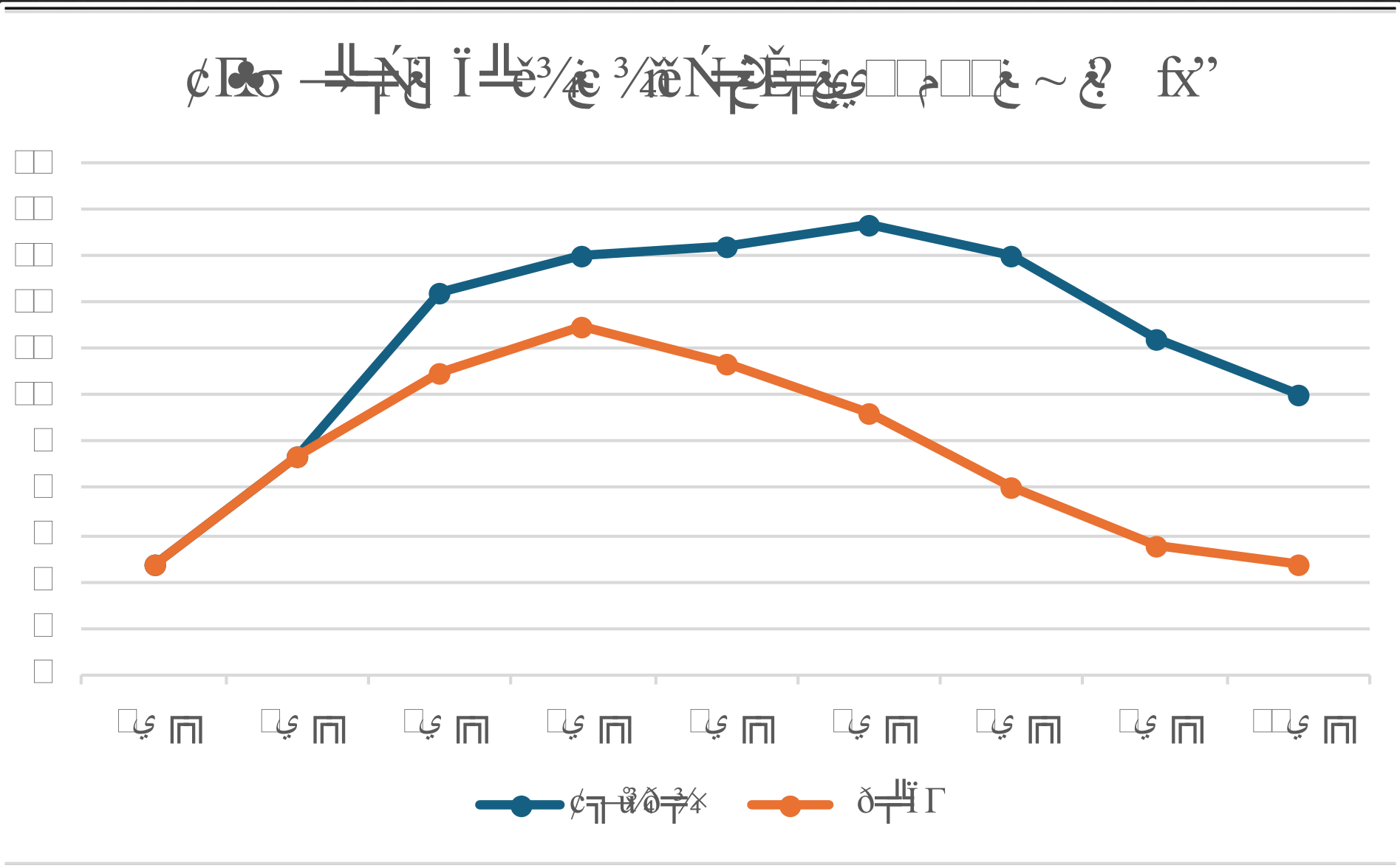
APRIL 2 FORECAST V. ACTUAL

REGIONAL CONDITIONS



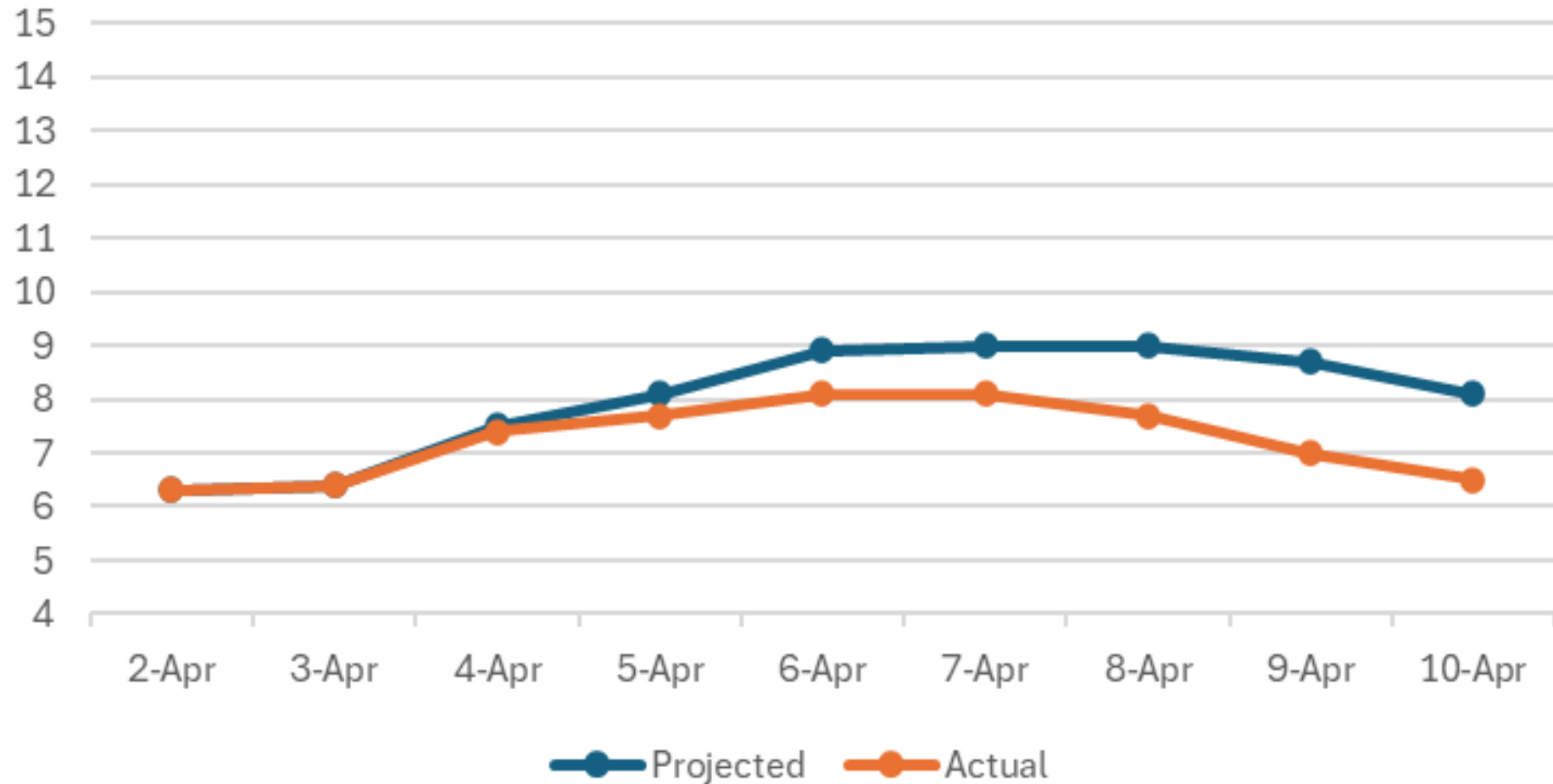
The graph shows the frequency of 'ي' (ya) in Arabic text. The x-axis represents the frequency of 'ي' (ya) in Arabic text, and the y-axis represents the frequency of 'ي' (ya) in Arabic text. The blue line represents 'ي' (ya) and the orange line represents 'ي' (ya).

Frequency of 'ي' (ya) in Arabic text	Frequency of 'ي' (ya) in Arabic text (Blue line)	Frequency of 'ي' (ya) in Arabic text (Orange line)
1	1	1
2	2	2
3	3	3
4	4	4
5	5	5
6	6	6
7	7	7
8	8	8
9	9	9



KNOX

Knox Gauge Height (ft) -- 12:00 AM DAILY

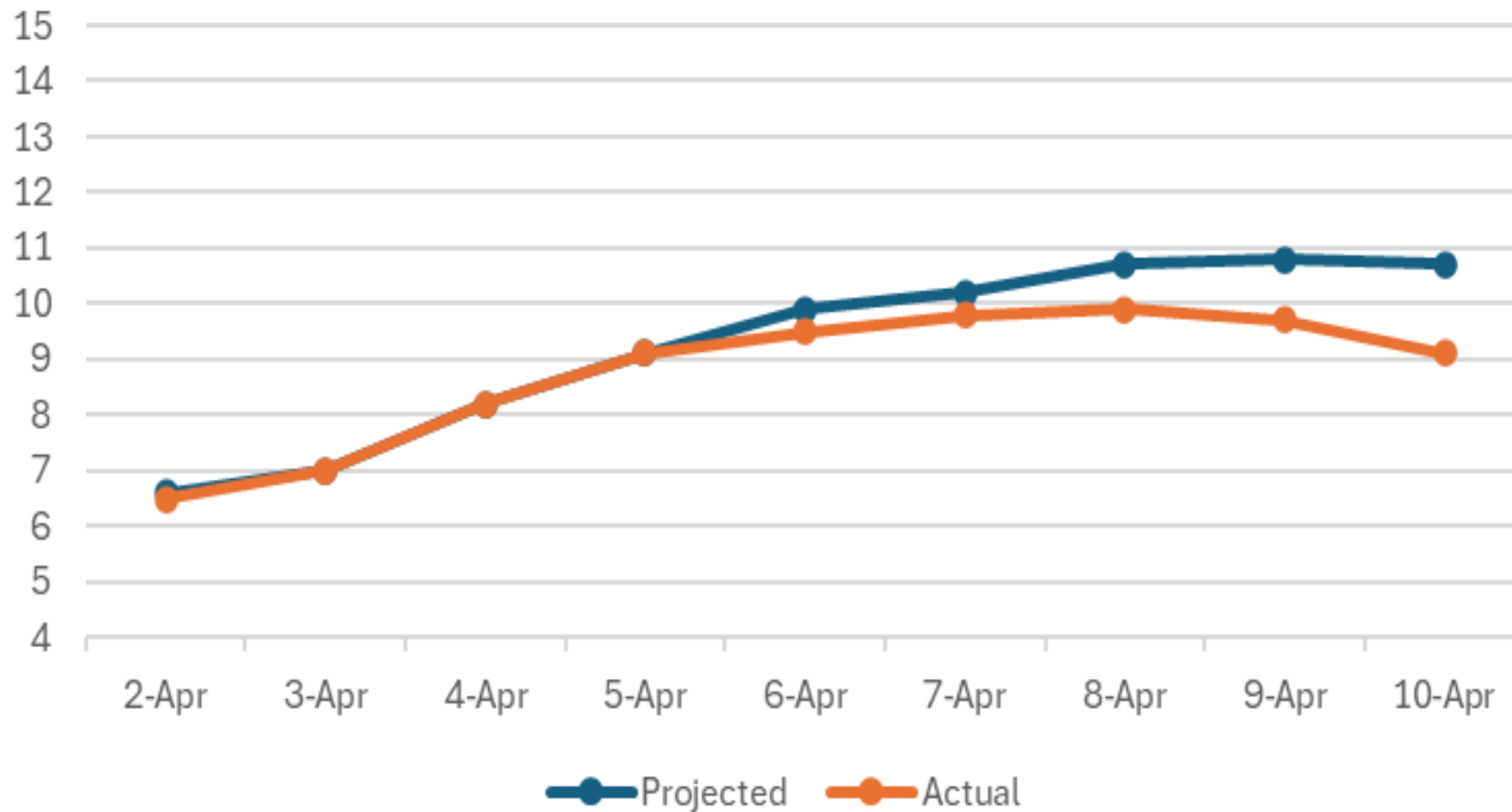


The graph displays the frequency of two Arabic words, 'يحيى' (Yahya) and 'يحيى' (Yahya), across different contexts. The x-axis lists various contexts, and the y-axis shows frequency from 0 to 10. The blue line represents 'يحيى' and the orange line represents 'يحيى'.

Context	يحيى (Blue)	يحيى (Orange)
يحيى	1	2
يحيى	3	3
يحيى	5	6
يحيى	4	4
يحيى	6	4
يحيى	5	3
يحيى	4	2
يحيى	3	1
يحيى	2	1

DUNN'S BRIDGE

Dunn's Bridge Gauge Height (ft) -- 12:00 AM DAILY



The graph displays the percentage of correct answers for two groups across nine items. The Y-axis represents the percentage of correct answers, ranging from 0% to 100% in 10% increments. The X-axis lists the items: 1. ي، 2. ي، 3. ي، 4. ي، 5. ي، 6. ي، 7. ي، 8. ي، 9. ي.

Legend:

- Control (Blue line with circles)
- Experimental (Orange line with circles)

Item	Control (%)	Experimental (%)
1. ي،	20	15
2. ي،	25	20
3. ي،	30	25
4. ي،	35	30
5. ي،	45	40
6. ي،	50	45
7. ي،	55	50
8. ي،	58	55
9. ي،	58	55

RECENT RIVER WORK

STATE LINE BRIDGE



Sumava Resorts

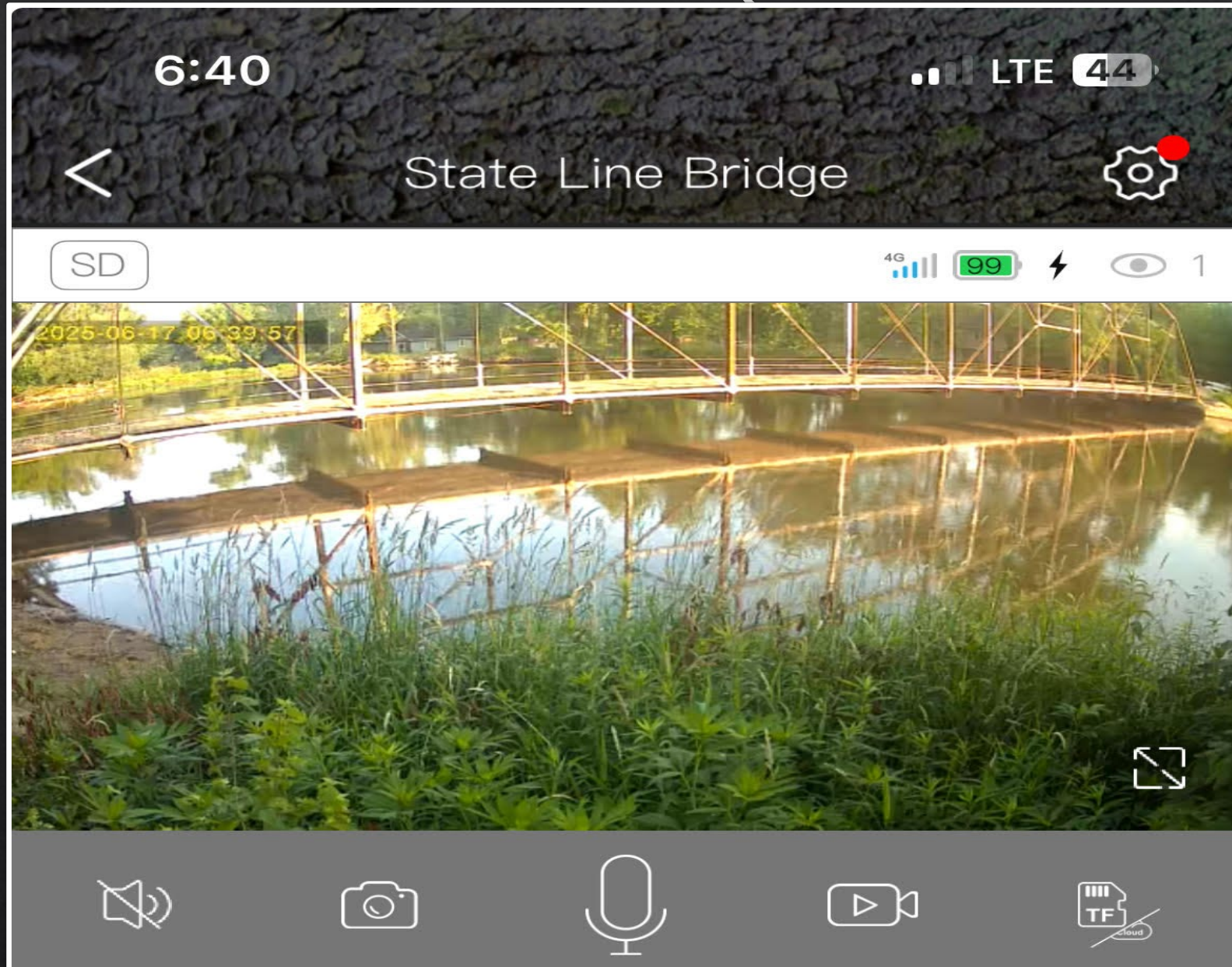
STATE LINE BRIDGE



STATE LINE BRIDGE



STATE LINE BRIDGE (CAMERA VIEW)



US 231



US 231



RAMSEY'S LANDING



RAMSEY'S LANDING



US 35 OVER YELLOW RIVER



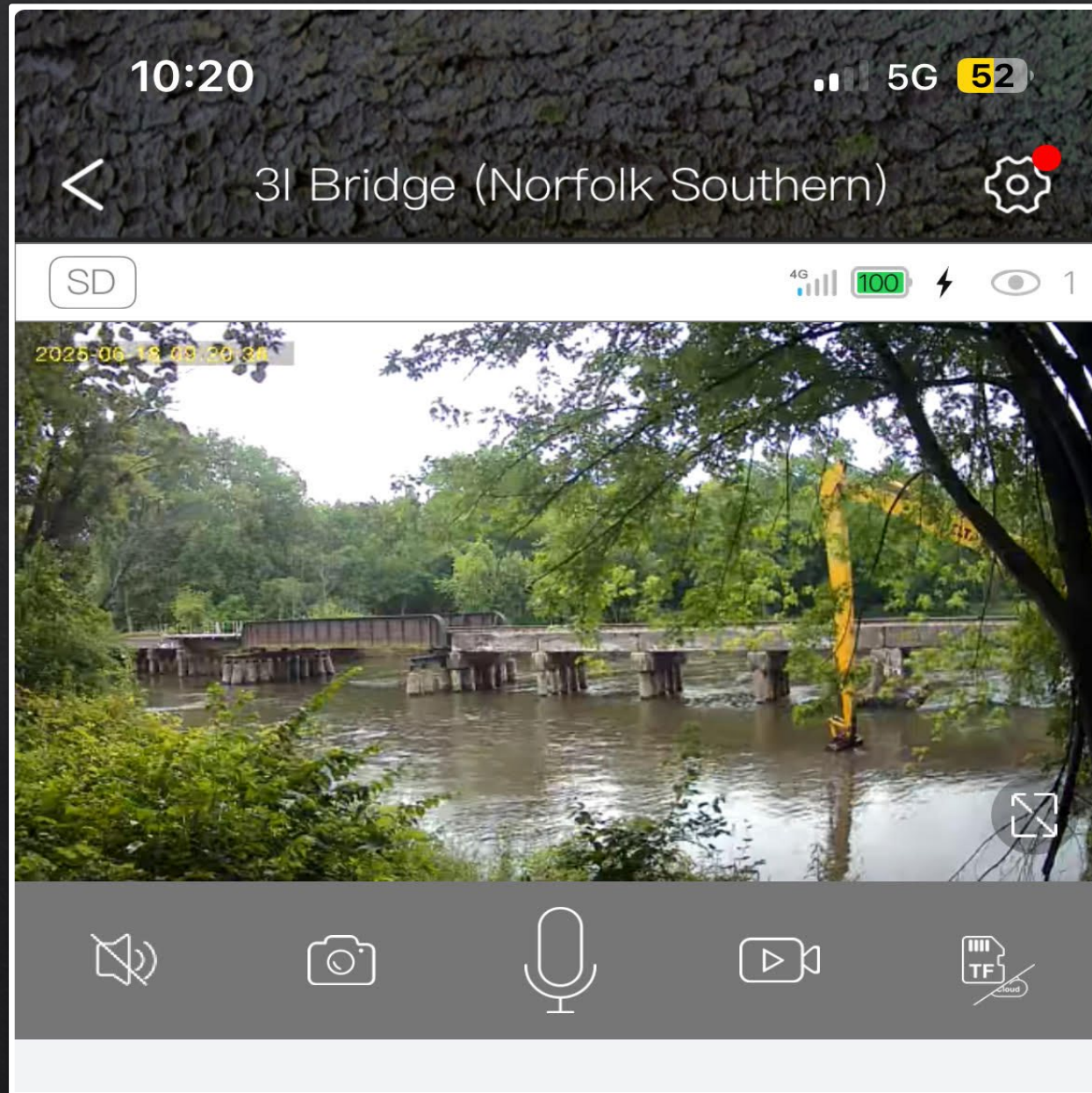
US 35 OVER YELLOW RIVER



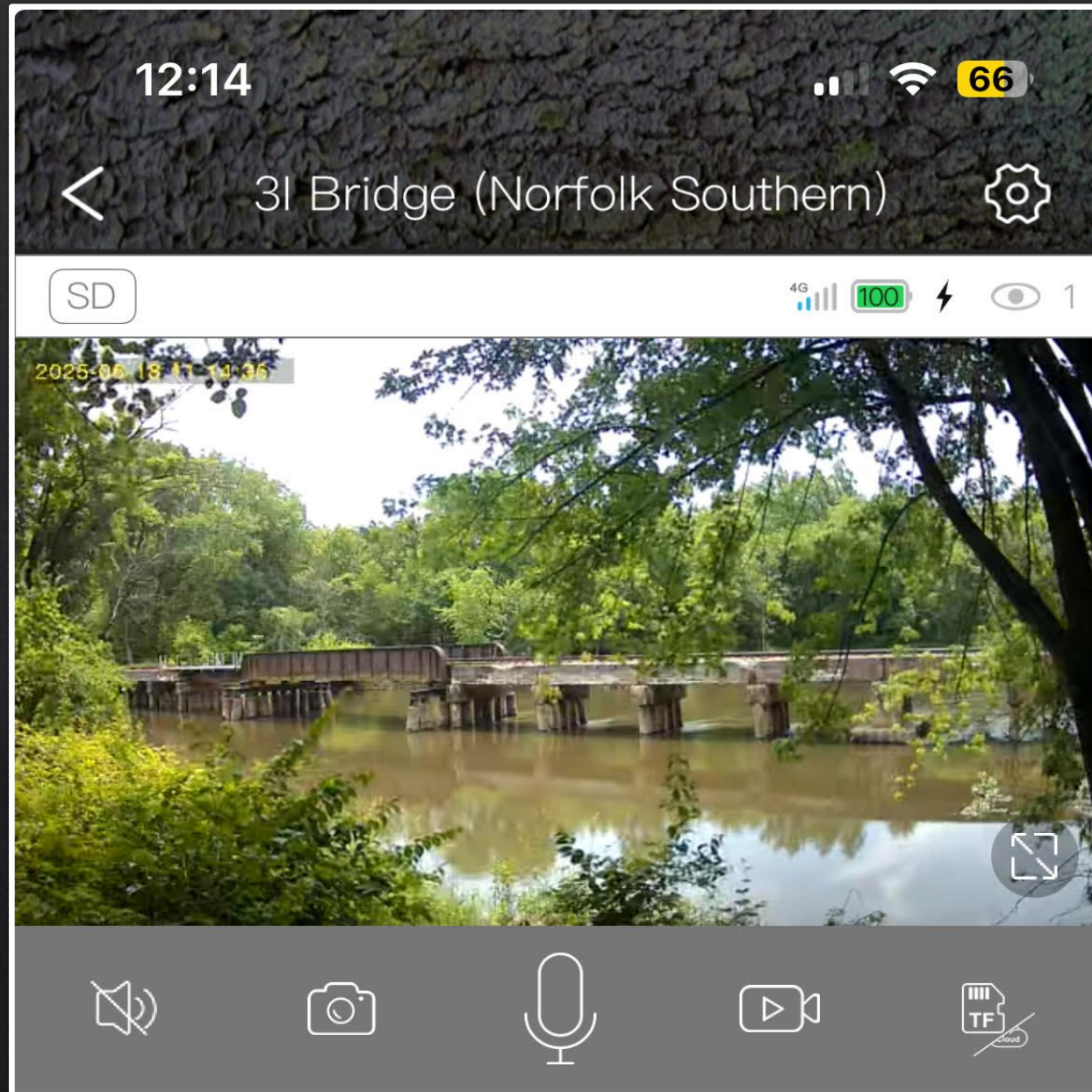
3-I BRIDGE



3-I BRIDGE



3-I BRIDGE



SEDIMENT PROJECTS

NEAR 200 EAST IN STARKE COUNTY



PROPOSED REMOVAL AT SHADY SHORES BAYOU



PROPOSED REMOVAL AT SHADY SHORES BAYOU



AROMA PARK, ILLINOIS

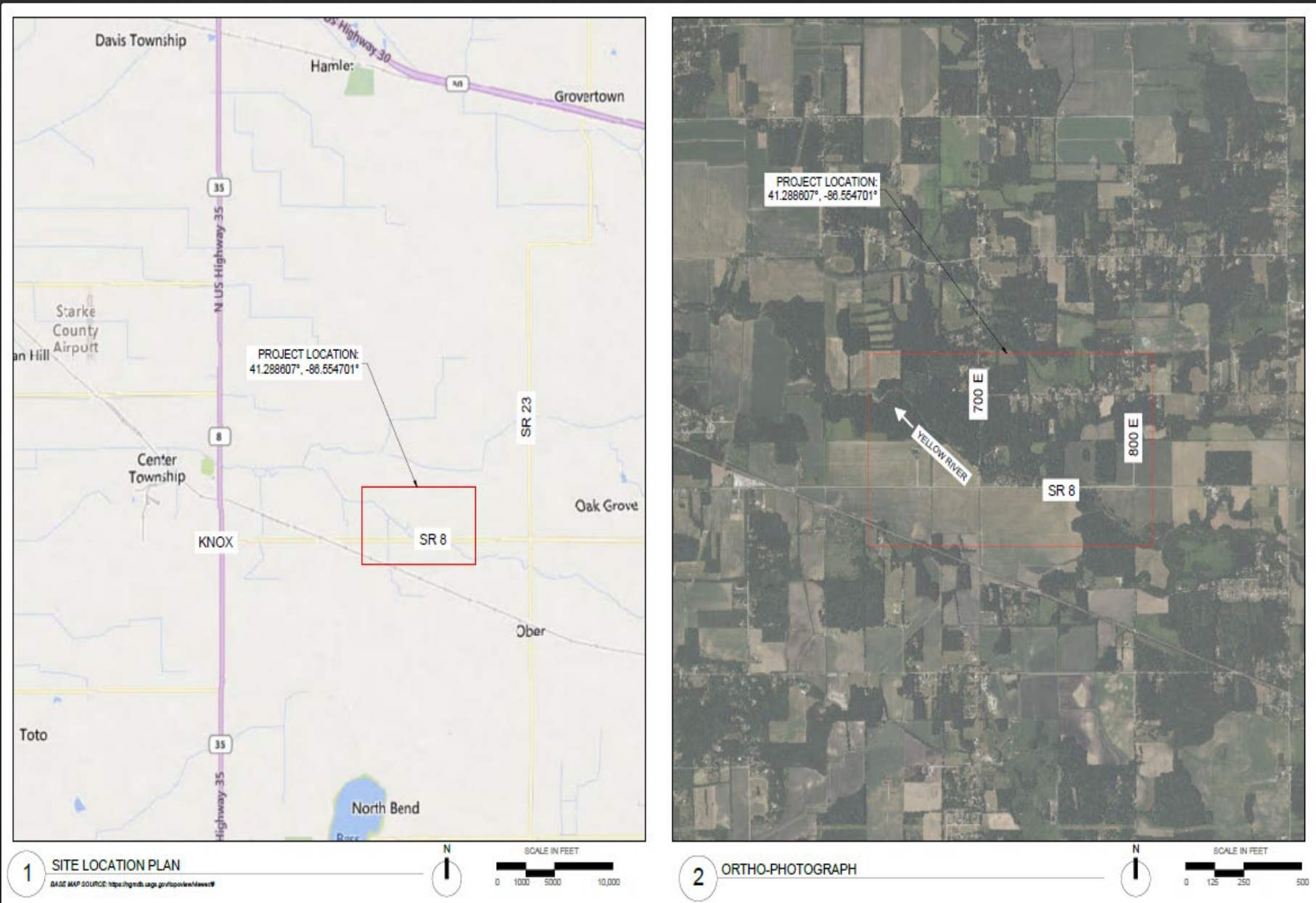


AROMA PARK, ILLINOIS



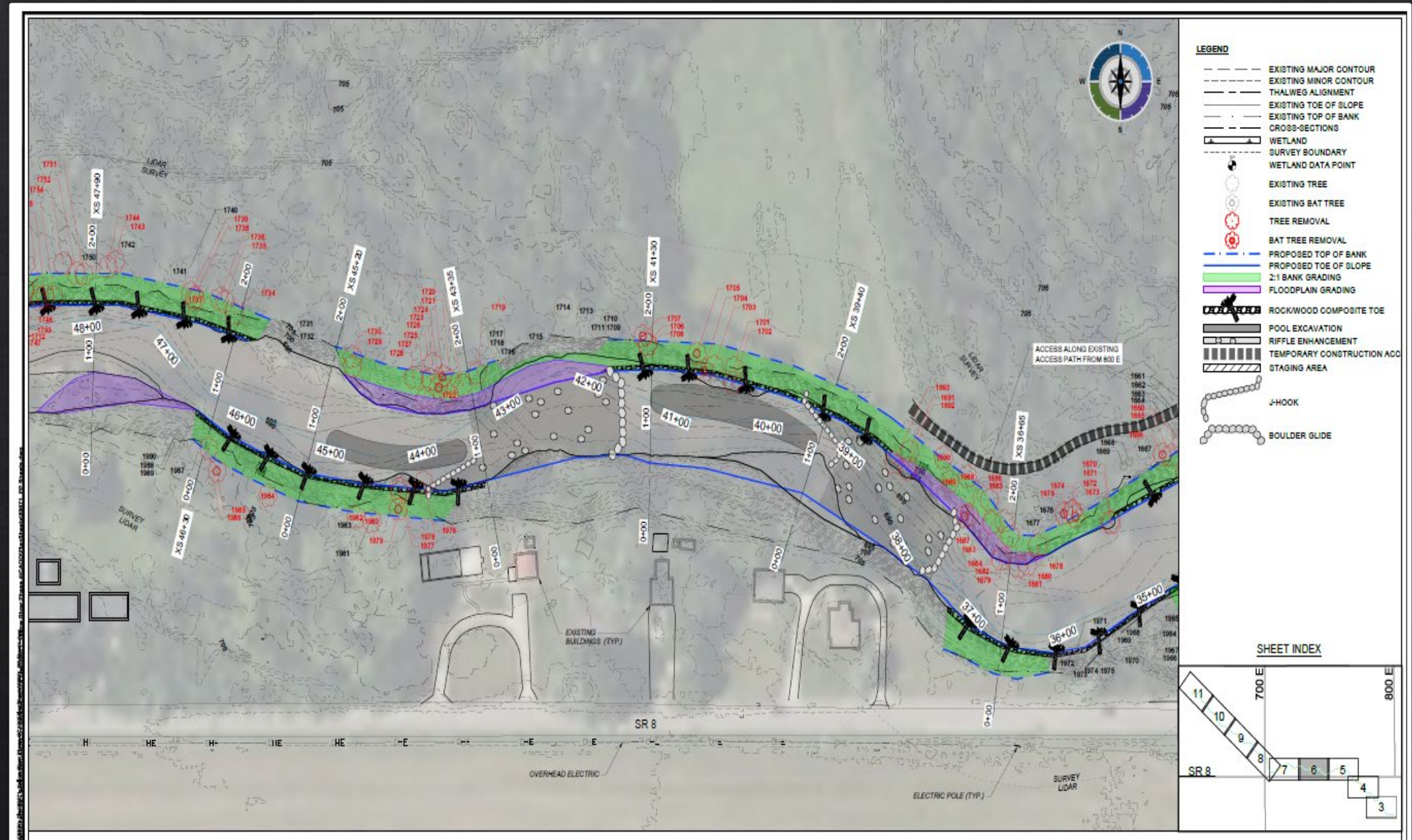
YELLOW RIVER RECONSTRUCTION, PHASE IV PLANNING

PHASE IV PROJECT AREA



[illegible]

PHASE IV SAMPLE SECTION



NEWTON COUNTY BANK RECONSTRUCTION PLANNING

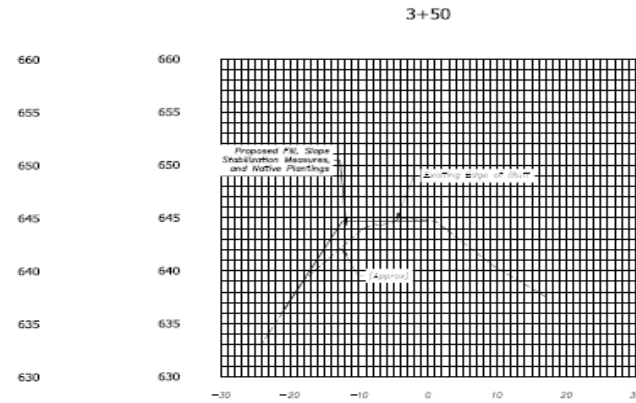
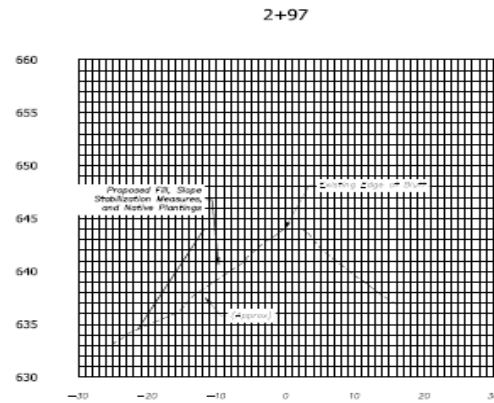
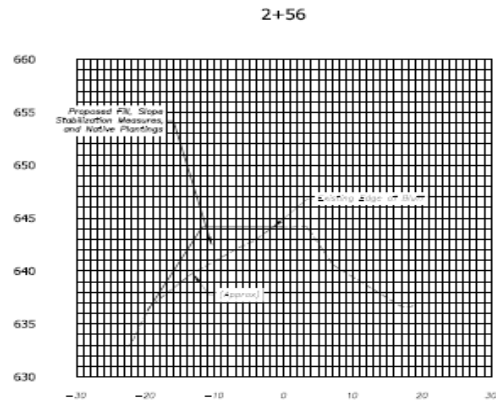
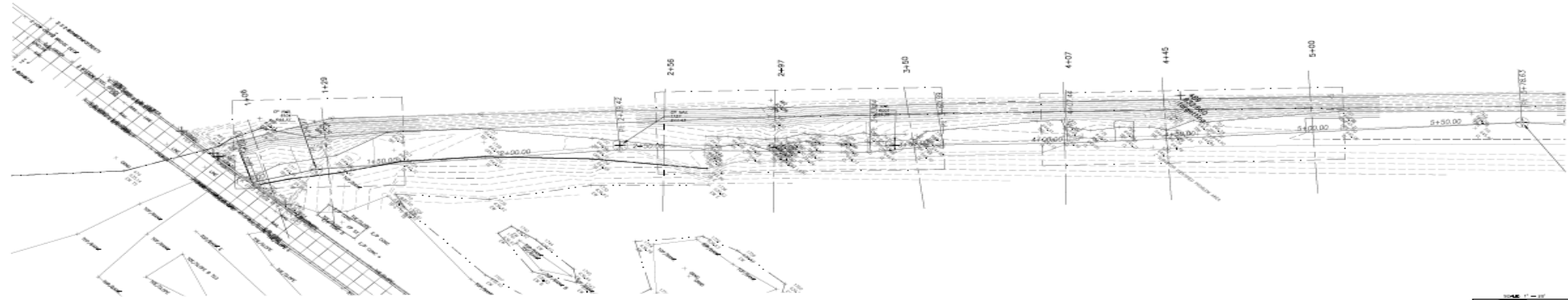
AREA OF CONCERN IN NEWTON COUNTY



Location Map - Aerial Image

(not to scale)

IMPROVEMENT NEAR 3I BRIDGE FOR HEAVY EQUIPMENT



ABONMARCHÉ
 311 N. Jefferson Blvd.
 Suite 200
 Chicago, IL 60604
 Tel: 773.444.4444
 Fax: 773.444.4444
 Email: info@abonmarche.com
 Website: www.abonmarche.com

PROJECT
 KANKAKEE RIVERBANK STABILIZATION
 WEST OF I-65
 NEWTON COUNTY

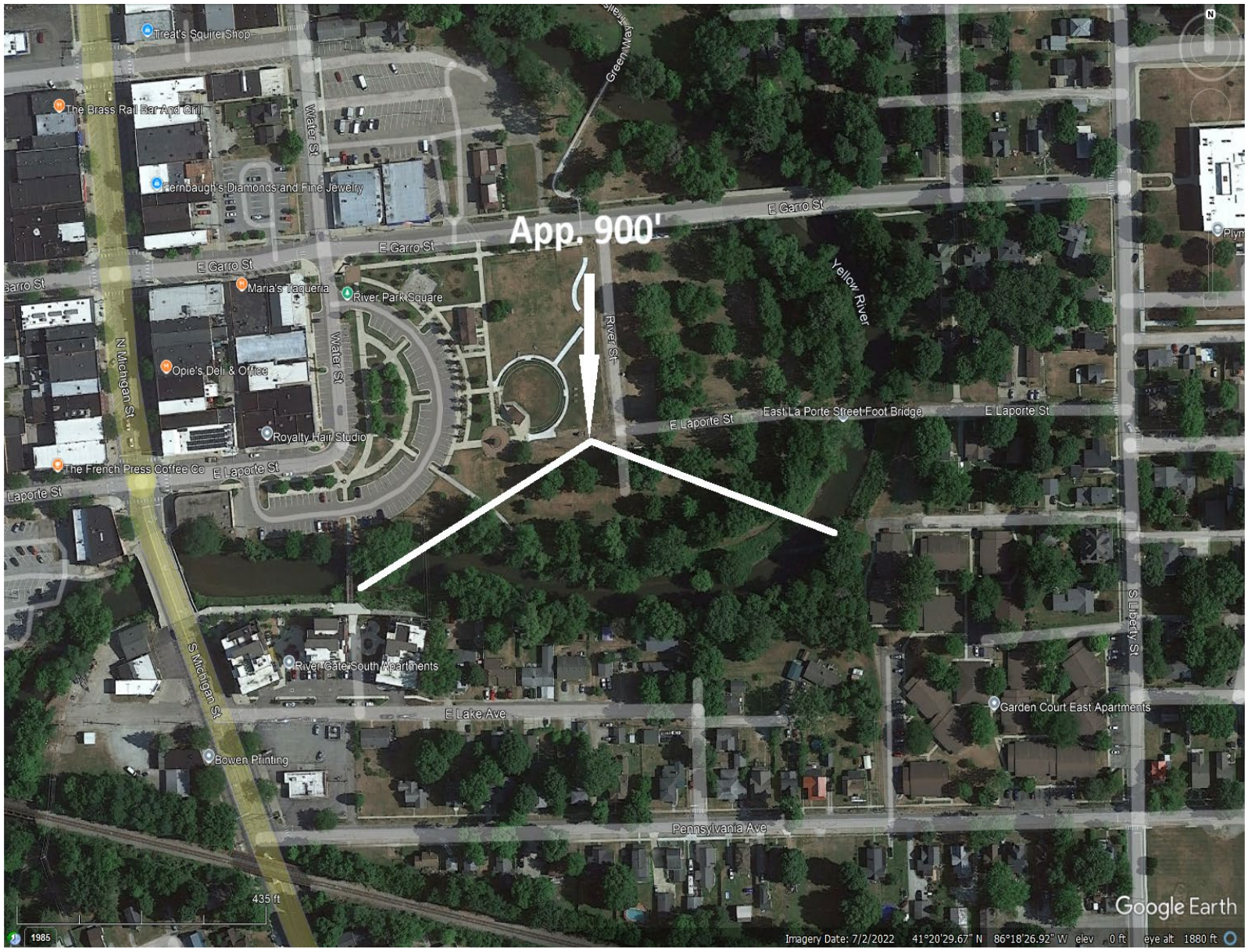
CROSS SECTIONS
 STA 4+17 TO STA 6+45

DETAILS
 DRAWN BY: TJB
 DESIGNED BY: DESIGN
 CHECKED BY: MK
 QUANTITY BY: GAUGIC
 DATE: 3-1-2025
 SCALE:

SIGNATURE
 DATE:
 SCALE:
 HORIZ: 1" = 10'
 VERT: 1" = 10'
 SHEET NO: 23-1298
 TOTAL SHEETS: 10 of SHT

POTENTIAL STABILIZATION SITE WITHIN PLYMOUTH

PLYMOUTH



PLYMOUTH



PLYMOUTH



PLYMOUTH



RECREATIONAL IMPROVEMENTS

LAUNCH AT ENGLISH LAKE



LAUNCH AT ENGLISH LAKE



LAUNCH AT ENGLISH LAKE





QUESTIONS?

Scott D. Pelath

(219) 861-7999

sdpelath@gmail.com