

# COMMISSION UPDATE

March 7, 2025

## KANKAKEE RIVER BASIN AND YELLOW RIVER BASIN DEVELOPMENT COMMISSION

Scott D. Pelath, Executive Director



# KANKAKEE RIVER BASIN





## MISSION

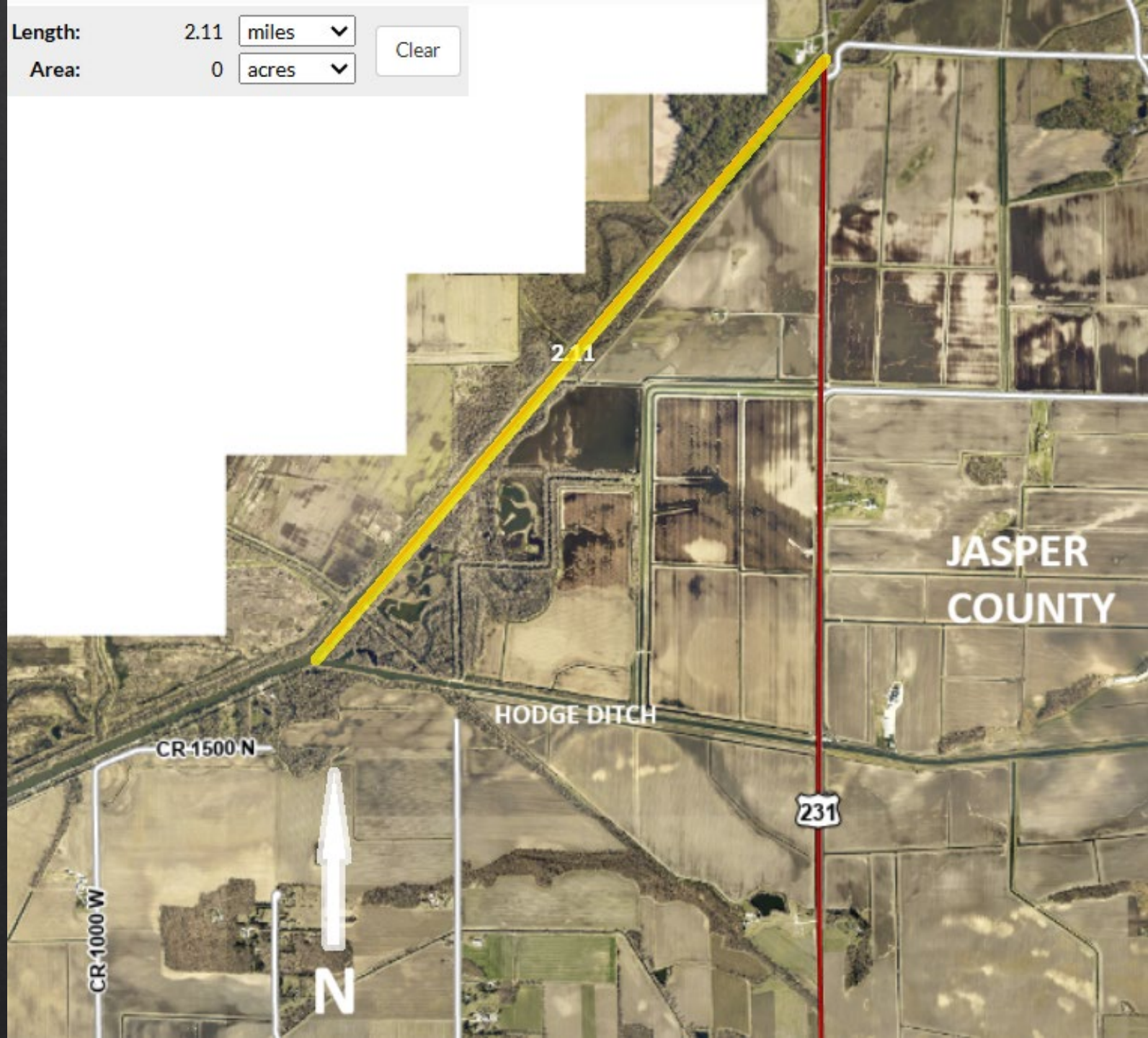
*The Kankakee River Basin and Yellow River Basin Development Commission advances Northwest Indiana's safety, economic prosperity, and quality of its natural resources.*



# JASPER COUNTY BANK STABILIZATION

# PROJECT FOOTPRINT

Length: 2.11 miles   
Area: 0 acres



# JASPER COUNTY PROJECT SITE -- BEFORE



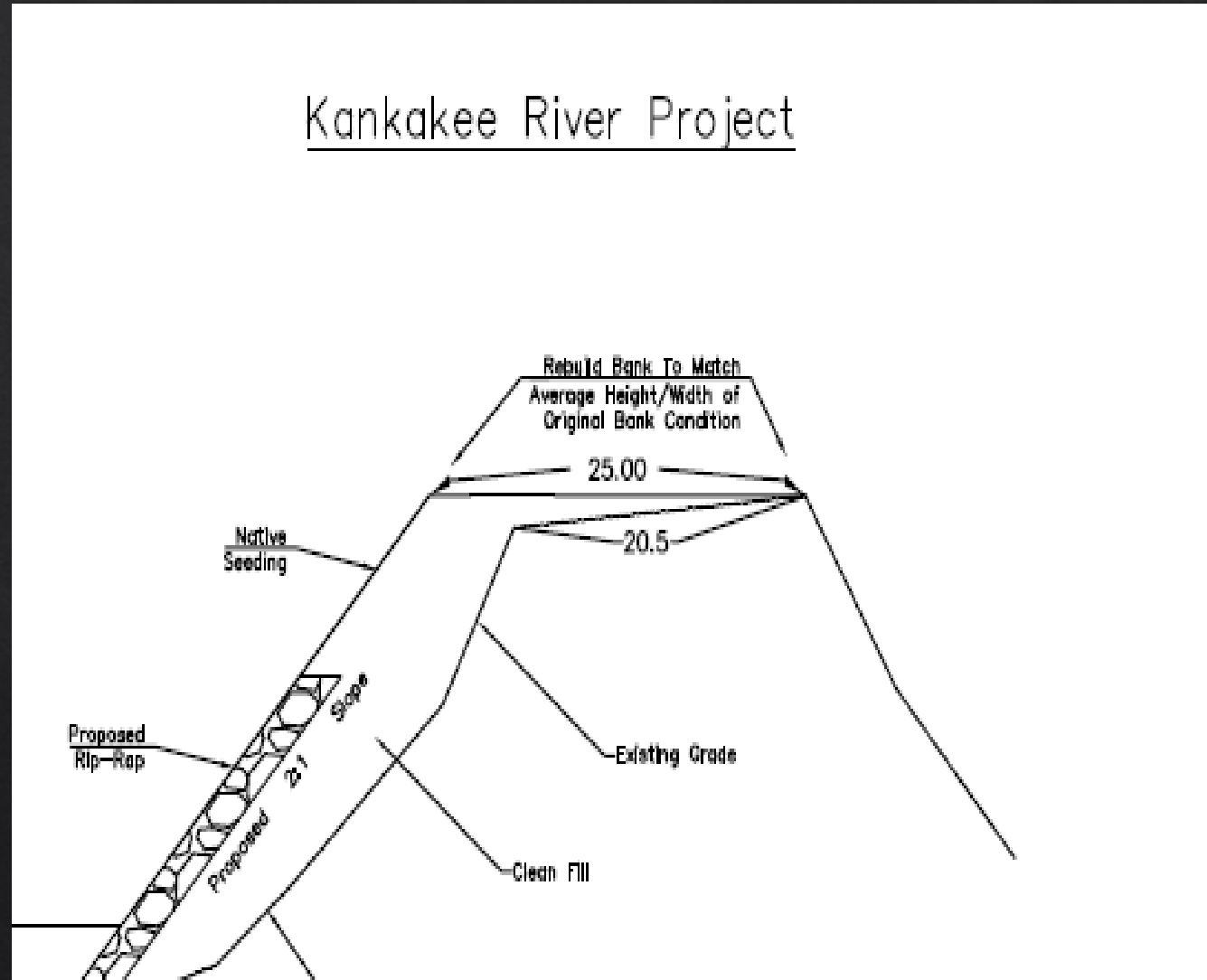
# JASPER COUNTY PROJECT SITE -- BEFORE





# JASPER COUNTY PROJECT CONCEPT

## Kankakee River Project



# JASPER COUNTY PROJECT SITE – JAN. 2025



# JASPER COUNTY PROJECT SITE – FEB. 2025

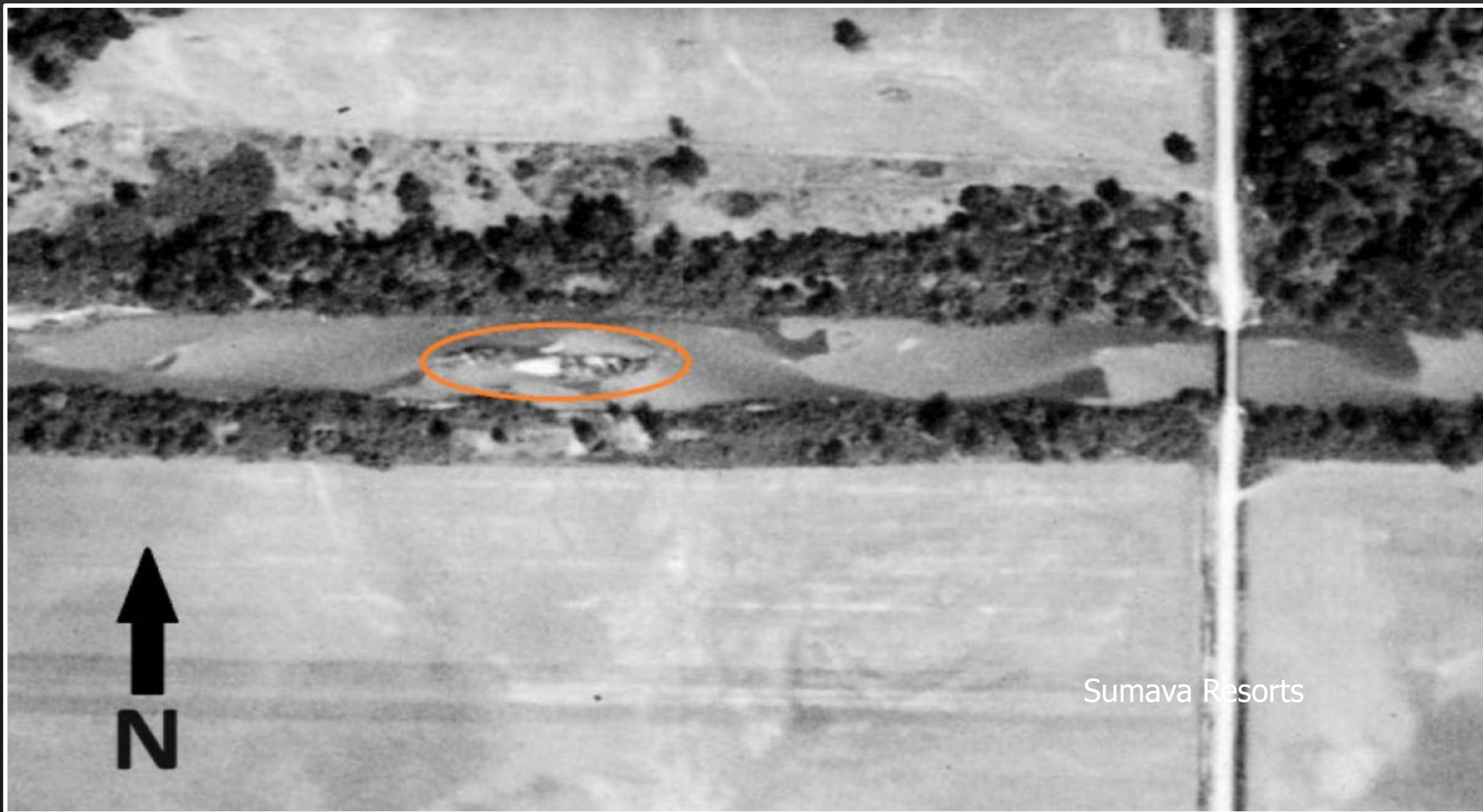


# EMERGENT ISLAND PILOT

# PILOT PROJECT LOCATION



# ISLAND IMAGE FROM 1938



Sumava Resorts

# VIEW FROM RANGE ROAD BRIDGE



# SPRING 2024 WITH LOGJAM





# WINTER LOGJAM MANAGEMENT

# PRESENT AREAS OF ATTENTION

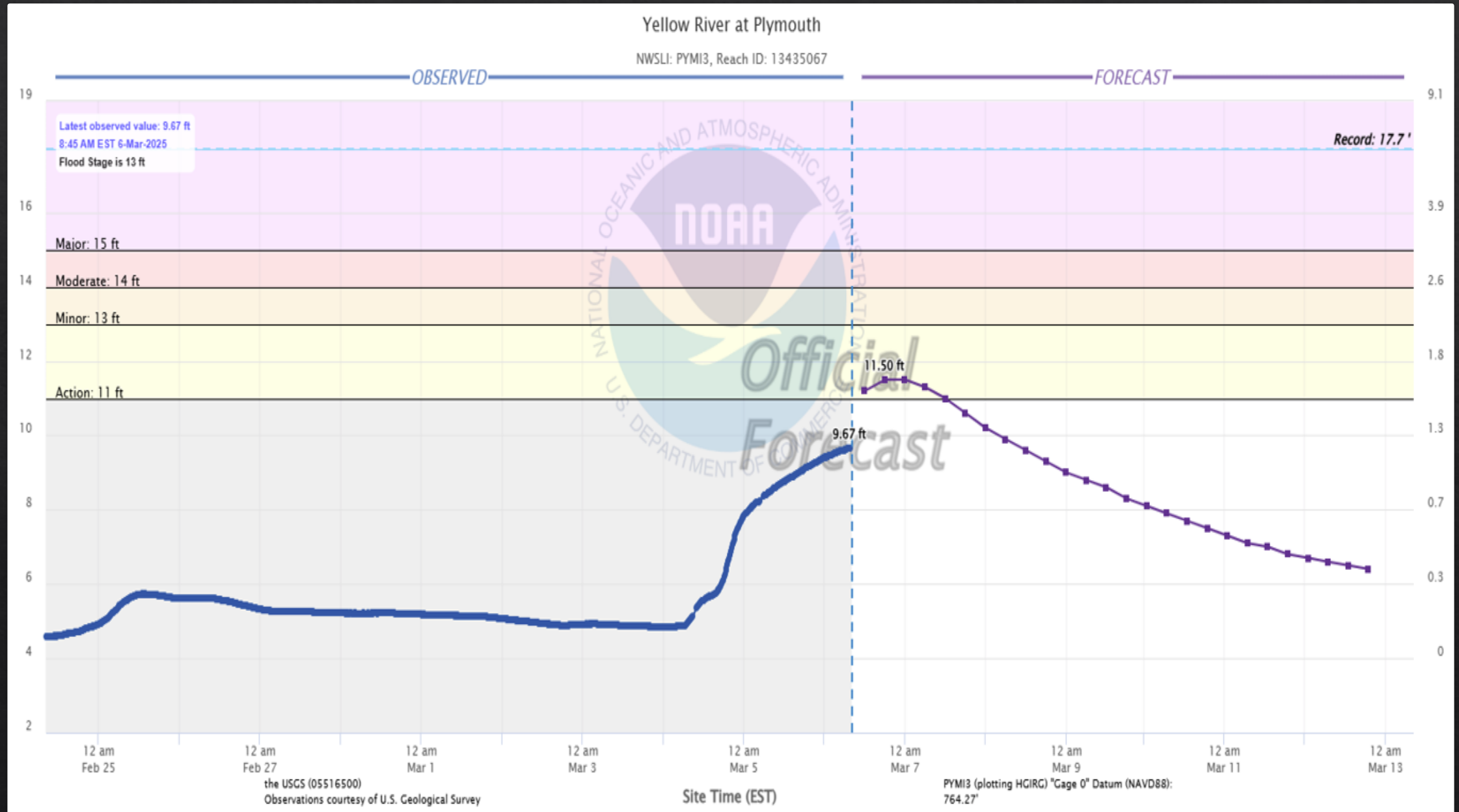
- ◆ The Yellow River between IN-17 and Upas Road in Marshall County
- ◆ The Kankakee from the Kingsbury boat launch and CR 1800 South in LaPorte County
- ◆ From Lomax Landing through the LaPorte-Porter County Line
- ◆ Between Baum's Bridge and CR 250 West in Porter County
- ◆ From the Clay Street bridge in Lake County to I-65.



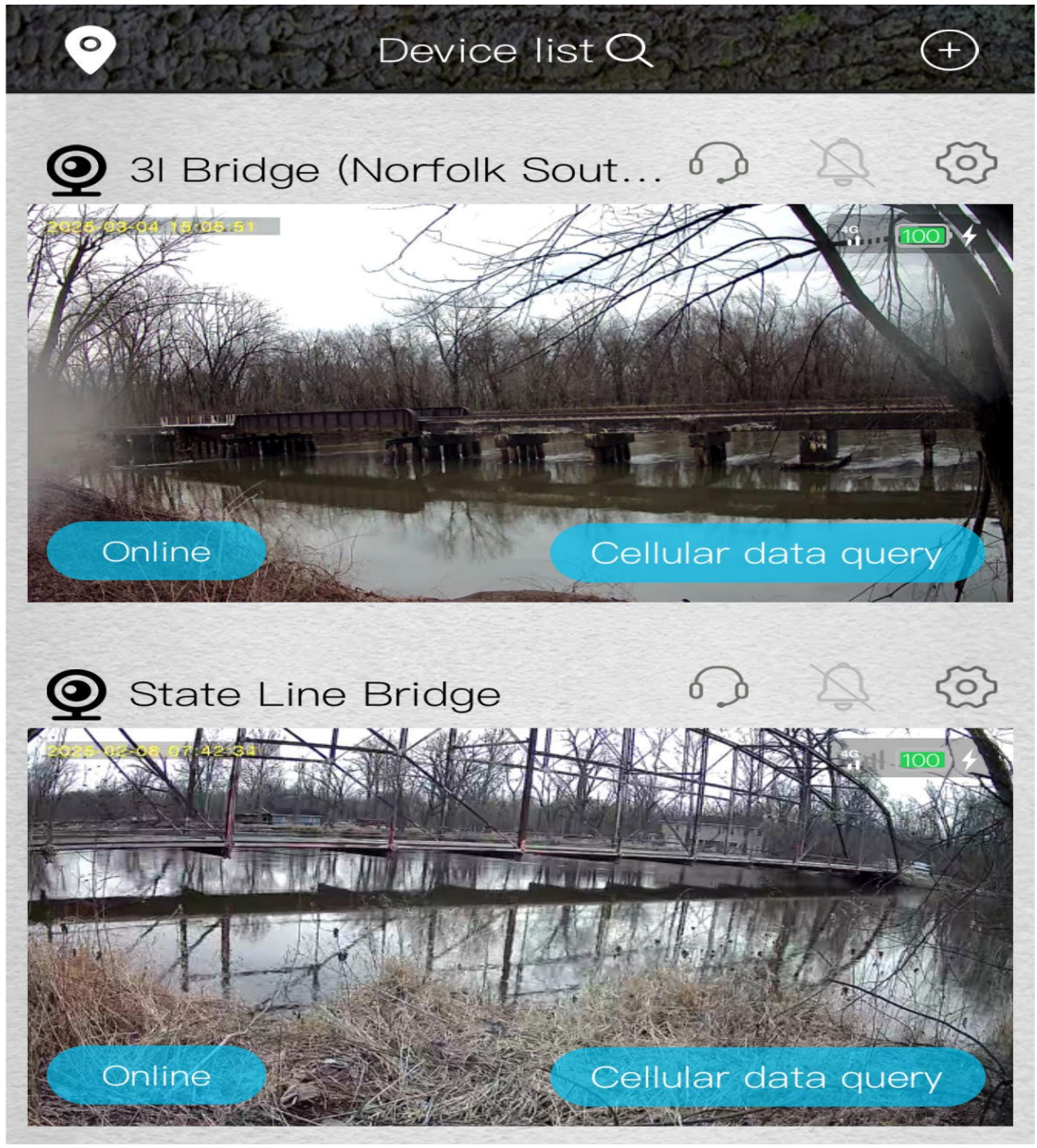
A TASK IN EVERY YEAR  
OF THE WORK PLAN



# ACTUAL V. FORECAST -- PLYMOUTH



# ELECTRONIC BRIDGE MONITORING





**MORE CAMERA MONITORING**

# USGS CAMERA NEAR US 30 OVER KANKAKEE

**KANKAKEE RIVER BELOW USHWY 30 NEAR HANNA**  
NGWOS GW SW interaction site looking upstream

KANKAKEE RIVER BELOW USHWY 30 NEAR HANNA, IN  
Friday, Feb 28, 2025 14:00:05 CST



▶ 0:10 / 0:10

🔊 🗄️ ⋮

The video frame shows a wide, shallow river with dark water flowing from the foreground towards the background. The left bank is covered in tall, dry, yellowish-brown grass. The right bank is lined with bare trees and some brush. In the distance, a bridge crosses the river. The sky is overcast with grey clouds. The video player interface at the bottom shows a play button, a progress bar at 0:10 / 0:10, and icons for volume, full screen, and a menu.

# USGS CAMERA AT OUT AUKIKI SPILLWAY





# COMMISSION CAMERA AT 1<sup>st</sup> ROAD NEAR BREMEN



COMING SOON!

Kankakee River at Shelby

Kankakee River at Shelby, IN Downstream Spillway

USGS CAMERA  
NEAR SHELBY

▶ 0:00



# QUESTIONS?

Scott D. Pelath

(219) 861-7999

[sdpelath@gmail.com](mailto:sdpelath@gmail.com)