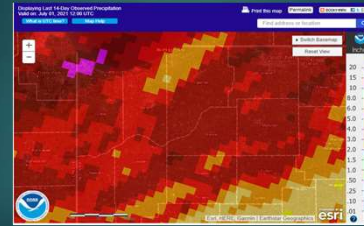


POST FLOOD EVENT ANALYSIS AND LOGJAM MANAGEMENT ACTIONS

KANKAKEE RIVER BASIN AND YELLOW RIVER BASIN DEVELOPMENT
COMMISSION, JULY 15, 2021

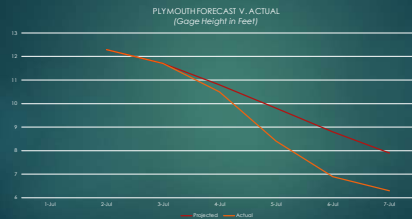
REGIONAL RAINFALL, June 16-30



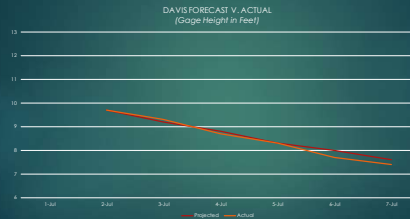
FLOOD FORECAST V. ACTUAL July 1-7, 2021

- SOURCES:
- NATIONAL WEATHER SERVICE PROJECTIONS
 - U.S. GEOLOGICAL SURVEY GAGES

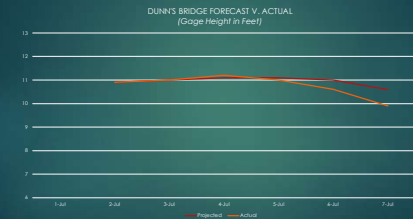
Plymouth, Gage Forecast v. Actual



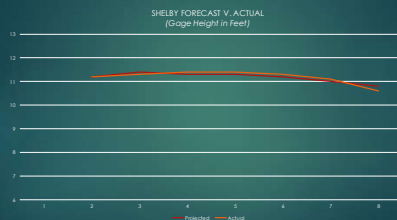
Davis, Gage Forecast v. Actual



Dunn's Bridge, Gage Forecast v. Actual



Shelby, Gage Forecast v. Actual



Post-Flood Event Issues and Actions

STATE LINE BRIDGE, BEFORE AND AFTER, Quotes Solicited



250 WEST IN PORTER COUNTY

Porter County Highway Work



U.S. 231

INDOT Removal Now Scheduled July 19



RANGE ROAD

Lake County Highway Removed



BAUM'S BRIDGE



U.S. 41



NORFOLK SOUTHERN BRIDGE

Must be addressed in writing

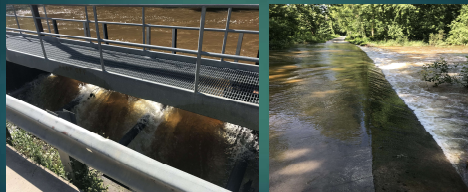


KANKAKEE FISH AND WILDLIFE AREA

FUTURE ISSUES TO CONSIDER

YELLOW RIVER

July 2, not at flood stage



KANKAKEE RIVER

July 2, flood stage at Shelby and Dunn's Bridge



OPEN SCREW GATES

North-South Levees



BANK CONCERN

Bend of Kankakee River at FWA



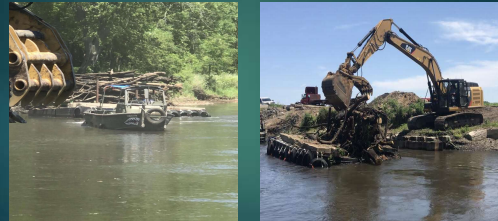
BANK CONCERN

Upstream of Dehaan Ditch in Newton County (11.4' at Shelby)



LOGJAM MANAGMENT

PORTER COUNTY BARGE PILOT



PORTER COUNTY BARGE PILOT



YELLOW RIVER LOGJAM WORK



YELLOW RIVER LOGJAM WORK



YELLOW RIVER LOGJAM WORK

