



# BASIN DEVELOPMENT COMMISSION UPDATE

KANKAKEE RIVER BASIN AND YELLOW RIVER BASIN DEVELOPMENT  
COMMISSION, OCTOBER 29, 2021



# GRAND KANKAKEE MARSH COUNTY PARK



# BANK CONDITIONS “BEFORE”

March, 2021





# March, 2021





# March, 2021





# August, 2021





# August, 2021





# August, 2021





# August, 2021





# Channel View, October 2021







# YELLOW RIVER BANK RECONSTRUCTION



# DRONE FOOTAGE, DECEMBER 2020

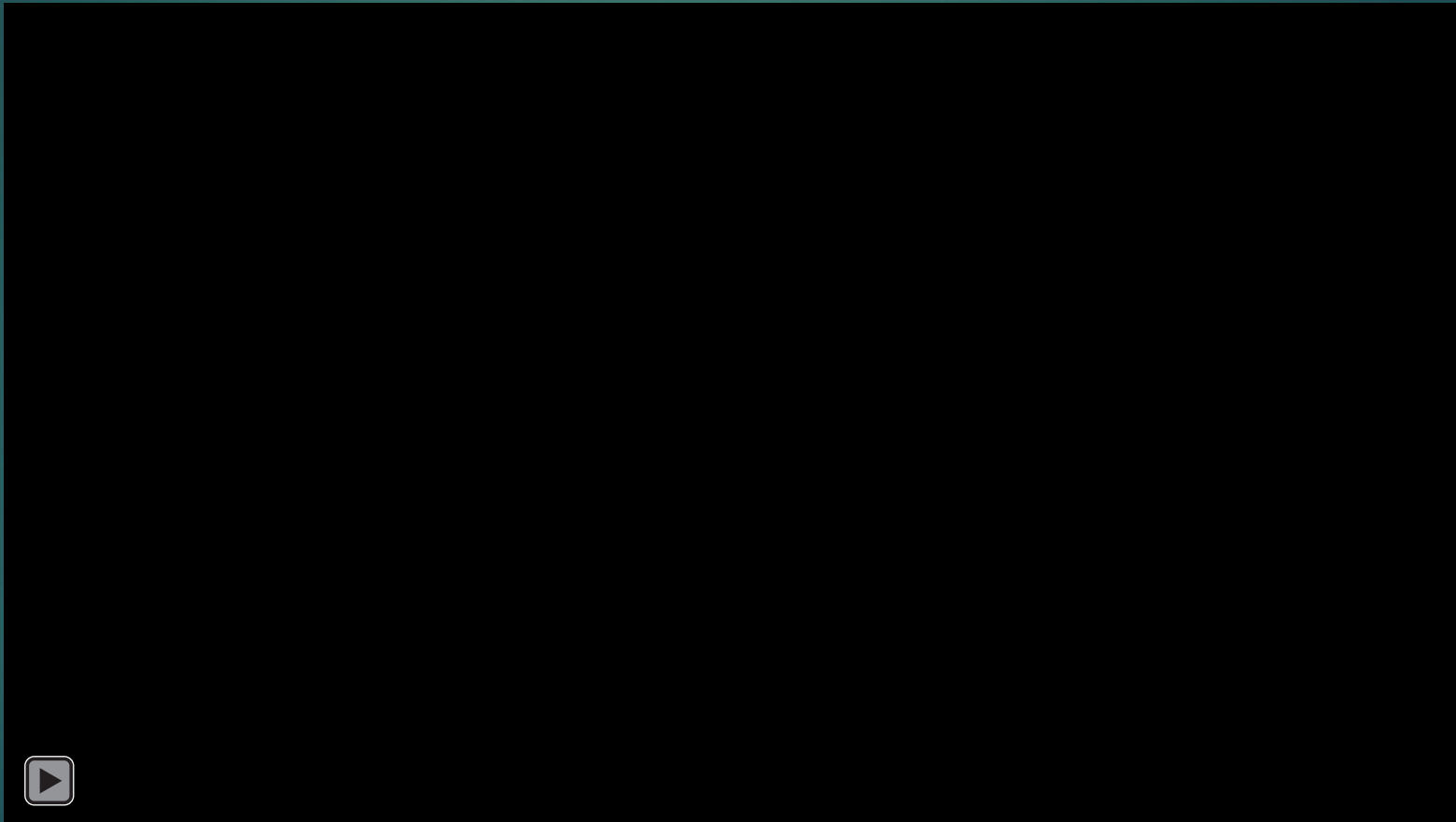
*Courtesy of Porter County Stormwater*





# DRONE FOOTAGE, OCTOBER 9, 2021

*Courtesy of Marshall County Surveyor*





# 45' Sand Bank, December 2020





# 45' Sand Bank, October 23, 2021





# 45' Sand Bank, October 23, 2021





# Facing West, December 2020





# Facing West, September 17, 2021





# Facing East, October 8, 2021





# Facing East, October 29, 2021

*Following 4' increase*





# OBSERVATIONS SO FAR

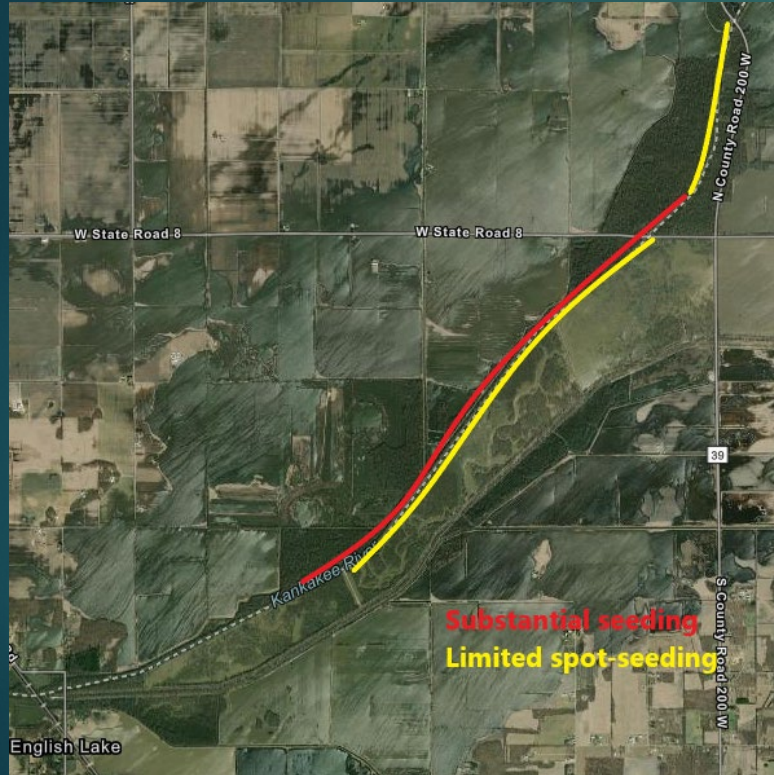
- ▶ Close teamwork between designer and contractor brings value and savings
- ▶ The amount of added channel capacity may have been undersold
- ▶ Toe wood works, but its utility on a project merits case-by-case evaluation
- ▶ On-site rock probably should be planned for as a supplement rather than a primary source
- ▶ Property owner preferences require careful consideration
- ▶ Enhanced riffle immediately and effectively protects the banks from erosion
- ▶ Erosion mats and seeding yield quick results



# HYDROSEEDING



# Hydroseeding Areas





# Typical Seeding Target



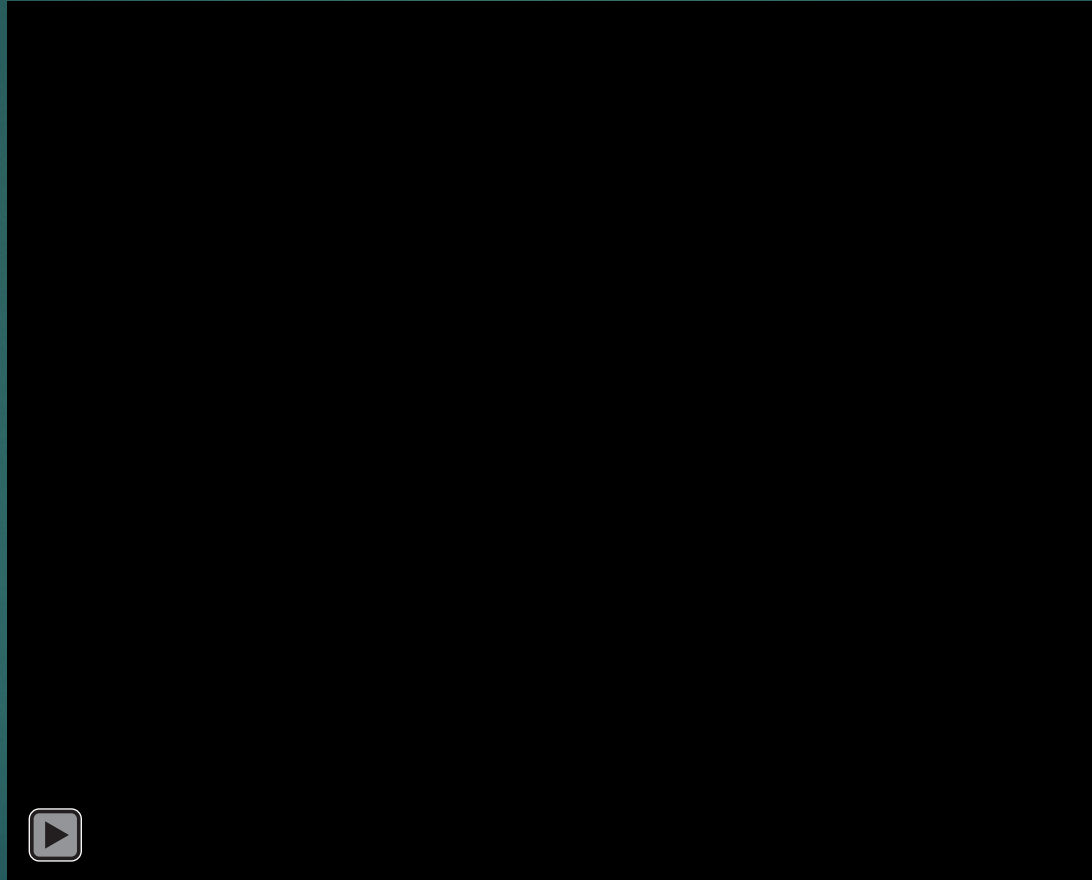


# Typical Seeding Target





# Hydroseeding Process





# Early Growth (10-14 days)





# Observations So Far

- ▶ Seeding from the channel markedly increases efficiency and conservation of material
- ▶ Speed and observability are substantially improved
- ▶ Seeding at low gage levels allows stabilization of more surface area
- ▶ Rapid change in river depth due to precipitation is an inherent factor
- ▶ First growth takes about 10 days in mild weather
- ▶ Results should be fully assessed in Spring, Summer, and Fall 2022